

Apartment Schwanenwall we 15

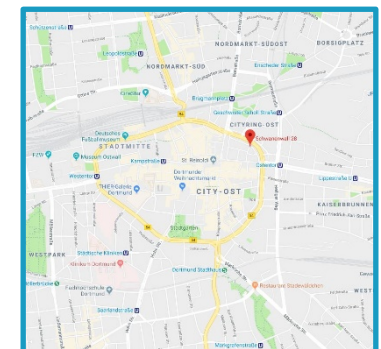
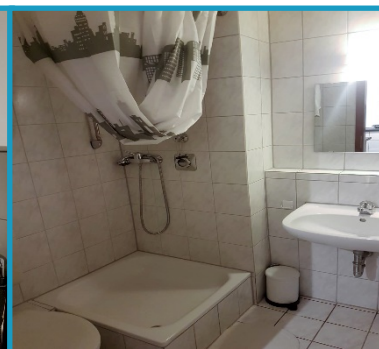
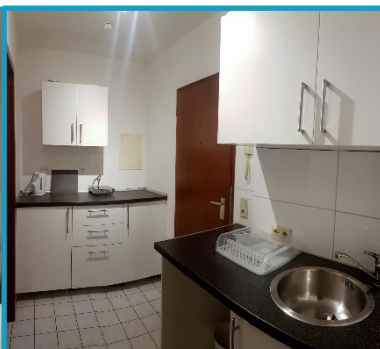
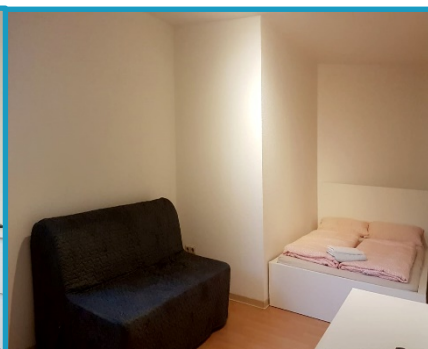
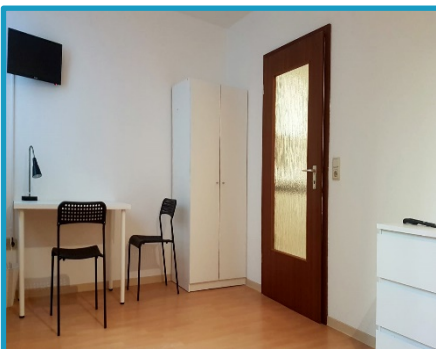


Dortmund Flats

TOP LOCATION | FLEXIBILITY | QUALITY

Fully furnished apartment
for 2-4 persons:

- ✓ Central location
- ✓ Excellent inbound logistics (main train station)
- ✓ 25 m² in size
- ✓ Fully-equipped kitchen: Toaster, electric kettle
- ✓ Vacuum cleaner



Dortmund Flats | Ernst-Mehlich-Straße 2-4 | 44141 Dortmund
+49 176 63 06 06 35 | info@dortmundflats.de | www.dortmundflats.de